


IMMACULATE
soft

Revolutionary Anti-Glare Luminaire



Are you troubled
with glare?





**GLARE?
EYE STRAIN?
FATIGUE?**

What's so Glaringly Inappropriate?

In today's workspaces, the general obsession towards creating brighter spaces with higher illuminance is forcing the LED product manufacturers to continuously upgrade technology and generate higher lux levels. In many such offices with direct lighting, these luminaires create high contrasts; resulting in Glare.

Glare is difficulty seeing in the presence of any kind of bright light – direct light, reflected sunlight or artificial light. In offices, Glare not only causes discomfort, but also has a significant impact on people's wellness.



Brighter luminaires produce higher contrast with the ceiling, causing Glare.

Working in such environments results in eye strain, fatigue and lack of productivity.

Conformance to UGR

With an objective to reduce the harmful effects of Glare, standards are set defining the permissible UGR for luminaires. European Standard BSEN 12464: 2002 **specifies the ideal $UGR < 19$ for Offices** where reading, writing, training, meetings or computer based work are the primary tasks.

What is UGR?

Why is it so important?

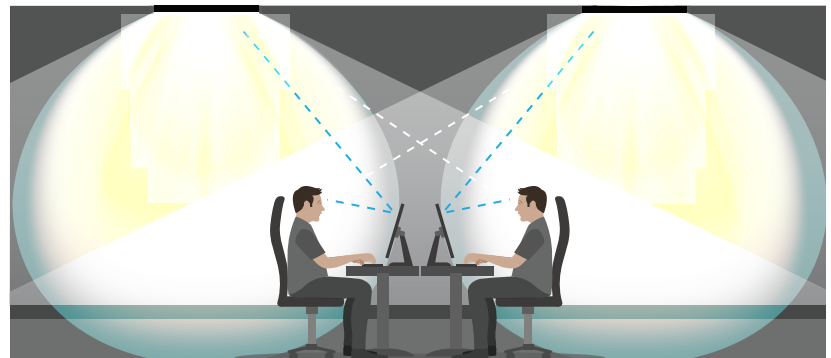
UGR (Unified Glare Rating) is a metric that is used to calculate level of glare in a certain application. Standards are set specific to applications and its related tasks, to ensure that the UGR is at the correct level for the space and doesn't interfere with general productivity.

Glare is a visual sensation that occurs when two competing light sources are present simultaneously in a person's line of vision. The main type of glare that is experienced in the offices is discomfort glare, usually caused by an overbearing back light around a computer screen or a strong overhead light. By adjusting the level of glare that is emitted by these luminaires to a more comfortable level for the eye, an optimum working environment can be achieved.

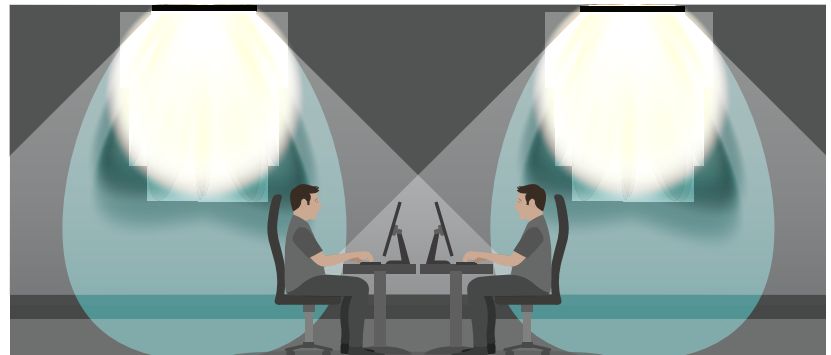
Glare can be experienced in two different ways – direct and indirect. In either cases, glare influences the human body and can result in fatigue, eye strain or even migraines.

Disability glare: This is defined as a situation where vision can be impaired, preventing oneself from seeing an object or completing an activity. Bright sunshine causing reflections of the windows on computer screens is one common example in workspaces.

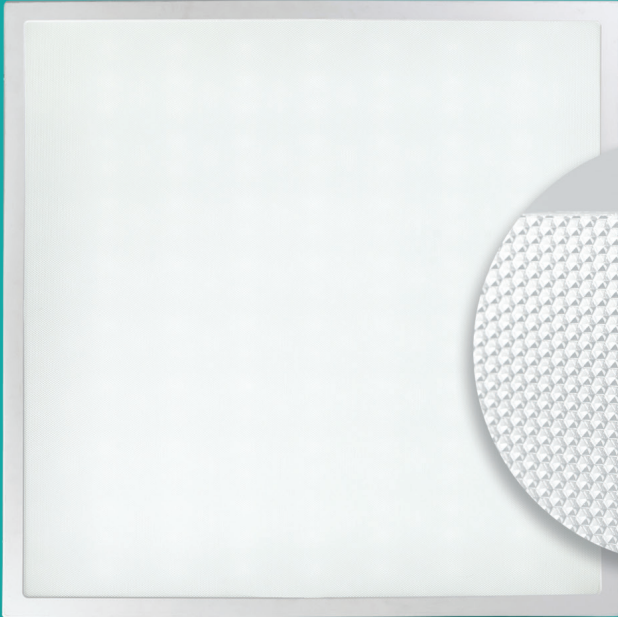
Discomfort glare: This is used to describe times where excessive luminance results in an automatic need to look away and a feeling of discomfort.



Incorrect optics causing direct and indirect glare



Correct optics



Immaculate Soft

CRCO10R033HP57UGR / CRCO10R033HP40UGR

Micro Precision Optics (MPO) diffuser

Special diffuser effectively shields the unwanted glare from the LEDs creating a soft, diffused light; comfortable to a human eye.



Immaculate Smart

CRCO10R030TL57UGSN / CRCO10R030TL40UGSN

Integrated Occupancy Sensor

Integrated occupancy sensor adds intelligence and technology advantage to the luminaire. It saves cost and installation time as well.

SPECIFICATIONS

White powder coated CRCA housing

Immaculate Soft – Specially designed Micro Precision Optics (MPO) diffuser which restricts the UGR<19

High efficacy LEDs gives uniform and optimum light output

Immaculate Smart – Integrated occupancy sensor for enhanced savings

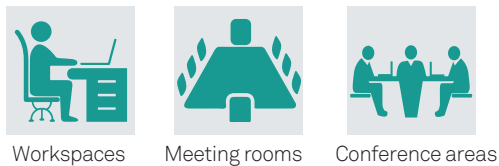
Compliance to IS 10322 / Part 5 / Sec 1 : 1987

ACCESSORIES

Order additional frame separately for Gypsum /POP applications

Order 9180P01089 for CRCA POP frame

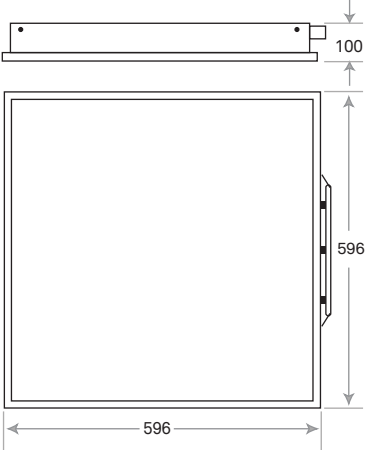
Available with DALI and Analog drivers on request



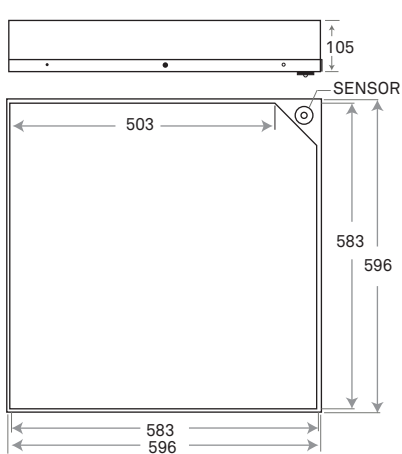
IP20

Category No.	System Wattage (W)	Rated Voltage (V)	Mains Current (A)	Case Lot (Nos)	Unit Weight (Kg)
Immaculate Soft					
CRCO10R033HP57UGR	33	240	0.14	2	3.5
CRCO10R033HP40UGR	33	240	0.14	2	3.5
Immaculate Smart					
CRCO10R030TL57UGSN	30	240	0.13	2	3.6
CRCO10R030TL40UGSN	30	240	0.13	2	3.6

Immaculate Soft



Immaculate Smart



All dimensions in mm. Tolerance ±2mm

WIPRO LIGHTING LEDEGE

Get the Edge with LED Lighting Solutions for Modern Workspaces through:

- Eco-sustainability, Design & Innovation, Green Technology and Efficient Lighting Solutions
- Capability to service Multi-locational Accounts
- Service Commitment – 19 branches and over 400 dedicated Stockists
- Ease of contact through Website
- Trustworthiness and Reliability of Wipro



Scan the QR code to download the app

New Delhi: 011-4170 8121/29, **Mumbai:** 022-6218 2000, **Chennai:** 95660 86333, **Bangalore:** 080-4150 3260, **Kolkata:** 033-4404 5886/87, **Pune:** 020-2553 5081, **Hyderabad:** 040-2717 6082, **Chandigarh:** 0172-501 8734, **Jaipur:** 0141-2280 014/4910 879, **Lucknow:** 0522-2434 352, **Baroda:** 0265-2395 830/35/36/41/45, **Ahmedabad:** 079-4007 3546, **Indore (MP):** 98279 99668, **Raipur (CG):** 0771-3265 725, **Bhubaneswar:** 0674-6450 804, **Coimbatore:** 98947 95836, **Nagpur:** 0712-2569 878, **Vishakhapatnam:** 96769 08080, **Cochin:** 98957 08464.

Business Office

Wipro Lighting, 5th floor, Godrej Eternia - C, old Pune-Mumbai highway, Shivajinagar, Pune 411 005. India.
(T) 020-66098700, (F) 020-66098777
helpdesk.lighting@wipro.com

Registered Office

Wipro Enterprises (P) Limited
'C' Block, CCLG Division, Doddakannelli, Sarjapur Road, Bangalore - 560035, India.

Innovation and Improvement are a way of life at Wipro. Care has been taken to ensure that the information content within is correct. We reserve the right to modify the product without prior intimation. Reproduction of this data in part or in whole without permission is prohibited. All rights reserved.



www.wiprolighting.com

Toll-free no: 1800-425-1969

Follow us on [in](#) [t](#) [f](#) [i](#)

