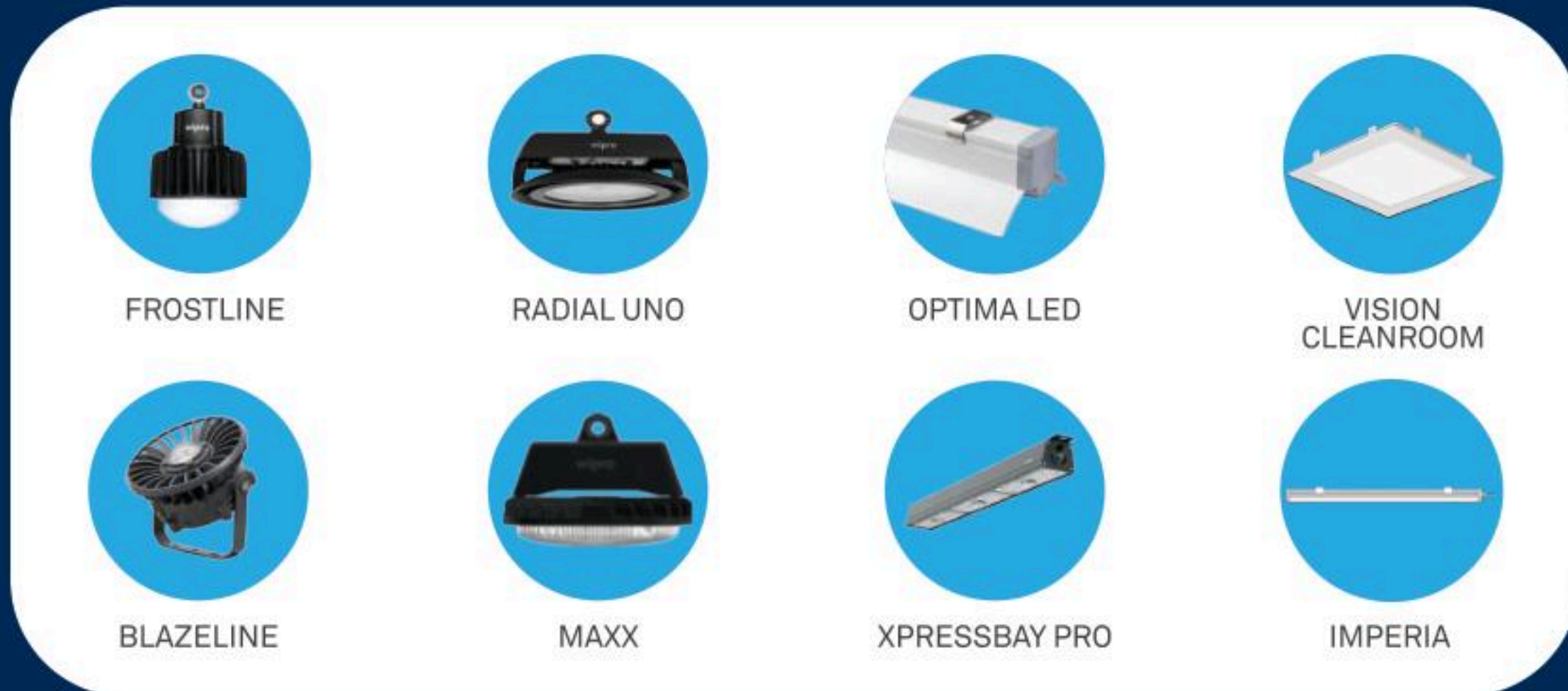


OTHER INDUSTRIAL GENIUSES



wipro advantage



Registered Office: Wipro Enterprises (P) Ltd, "Wipro House", No. 8, 7th Main, 80 Feet Road, Karamangala, 1st Block, Bangalore 560034, Karnataka, India.
Business Office: Wipro Lighting, 5th Floor, Godrej Eternia - C, Old Pune-Mumbai Highway, Shivajinagar, Pune 411005, India. (T) 020 66098700, (F) 020 66098777



www.wiprolighting.com | Toll free no: 1800 425 1969 | helpdesk.lighting@wipro.com

Follow us on: [in](#) [t](#) [f](#) [i](#) [y](#)

Branches: Ahmedabad | Bangalore | Baroda | Bhubaneswar | Chandigarh | Chennai | Cochin | Coimbatore | Hyderabad | Indore | Jaipur Kolkata | Lucknow | Mumbai | Nagpur | New Delhi | Pune | Raipur | Vishakhapatnam

Innovation and improvement are a way of life at Wipro. All rights reserved. Reproduction of this data in parts or in whole, without permission, is prohibited. Care has been taken to ensure that the information content within is correct. We reserve the right to modify the product without prior intimation. Imitation of Registered Designs is a punishable offence.



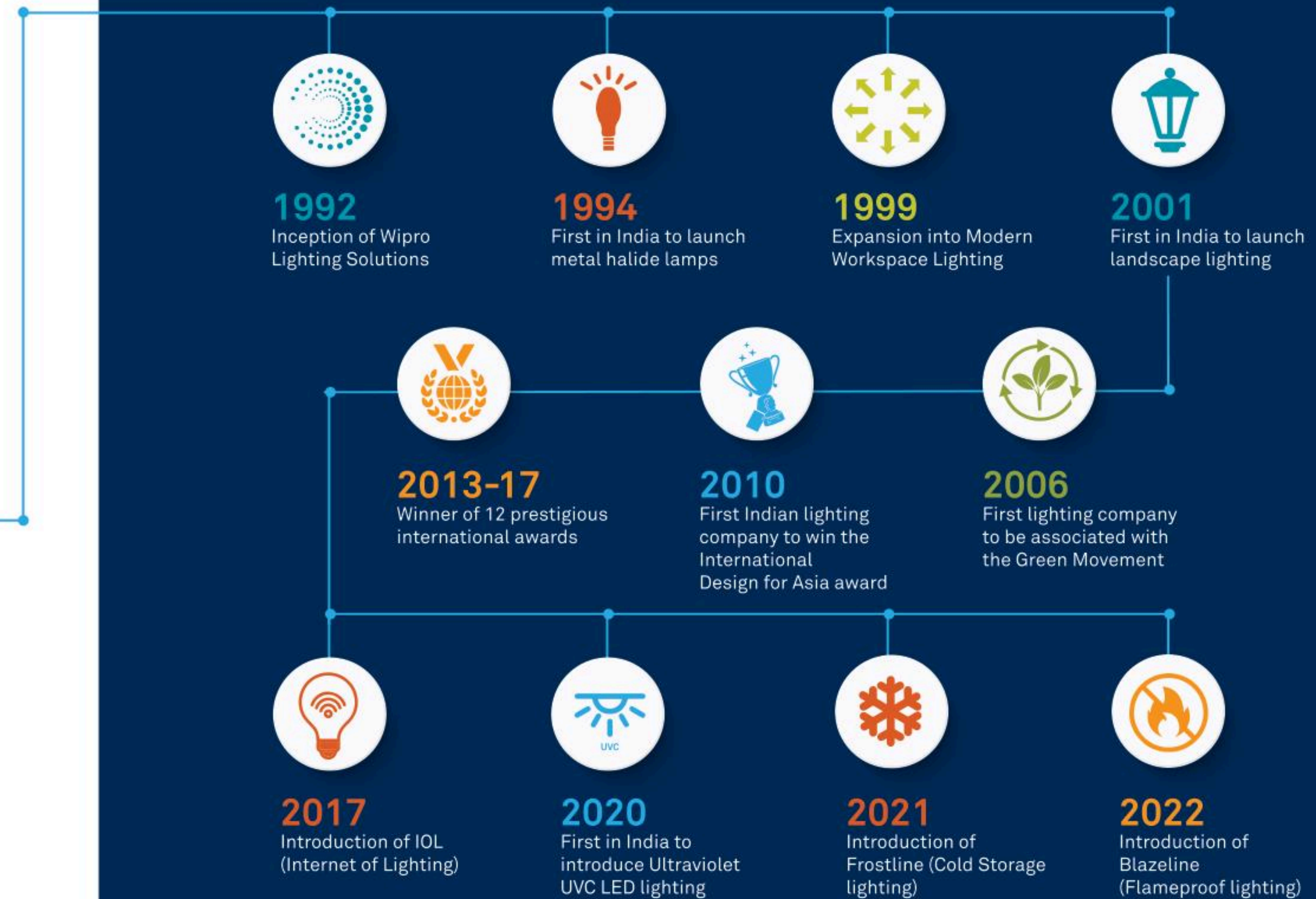
IF EYES COULD SPEAK, THEY'D SAY THANK YOU.

30 YEARS OF WIPRO LIGHTING

Celebrating a journey that is now defining the future of lighting

At Wipro, innovation is in our DNA.

Our leading-edge technology and customer-centric approach come together to provide intelligent lighting solutions across segments such as manufacturing, healthcare, outdoor, offices and much more. Recognized globally for thought-leadership and expert solutions, Wipro Lighting has been leading the category with excellence for the last 30 years!





THE IRONY WHEN LIGHTS DON'T LET YOU SEE CLEARLY

Do your eyes feel tired because of the constant glare from lights? Glare is often a result of poor light planning & lighting solutions. Bottling factories, assembly line production units, indoor sport courts & many other industries require low mounted linear highbays. Over time, these lights impart glare to the workforce that creates risks of occupational accidents and health problems such as eye strain, headache and many such. It thereby results in absenteeism, reduced productivity, misjudgement, affecting accuracy and makes the task more difficult with higher scope for error.

INTRODUCING ASTRA LIGHT THAT MAKE YOUR EYES SMILE



Presenting the newest addition to Wipro's industrial portfolio, Astra! Your strongest weapon to fight the glare in the form of a diffused linear highbay. No matter how low these lights hang, Astra is designed to protect your eyes from fatigue & provide optimum lighting to reduce pressure and strain. These lights go easy on the eyes and enable the workforce to focus on productivity, not problems. Astra, the perfect lighting choice for new age requirements, thinks human first!





CREATING HAPPIER WORKSPACES



FLEXIBILITY

- Surface mounting
- Suspended mounting



LIGHT QUALITY

- Industry leading CRI of 80



GLARE-FREE LIGHTING

- Opal diffuser
- Allows for lower mounting due to low glare



CONSTRUCTION

- CRCA with epoxy powder coating ensuring no corrosion



DUST AND WATER RESISTANT

- IP54 protected Luminaire
- IP65 potted driver



HIGH SAVINGS

- Long service life Upto 50,000 burning hours.



UNIFORM AND OPTIMUM LIGHT DISTRIBUTION

- Highly advance light engine
- Superior Efficacy of 120 Lm/W

THE ASTRA ADVANTAGE



VISUAL COMFORT



IMPROVED TASK EFFICIENCY



EMPLOYEE WELLBEING



INCREASED PRODUCTIVITY

APPLICATION AREAS



AUTOMOBILE
INDUSTRY



FOOD AND
BEVERAGE
INDUSTRY



BOTTLING
FACTORIES



INDOOR
STADIUMS

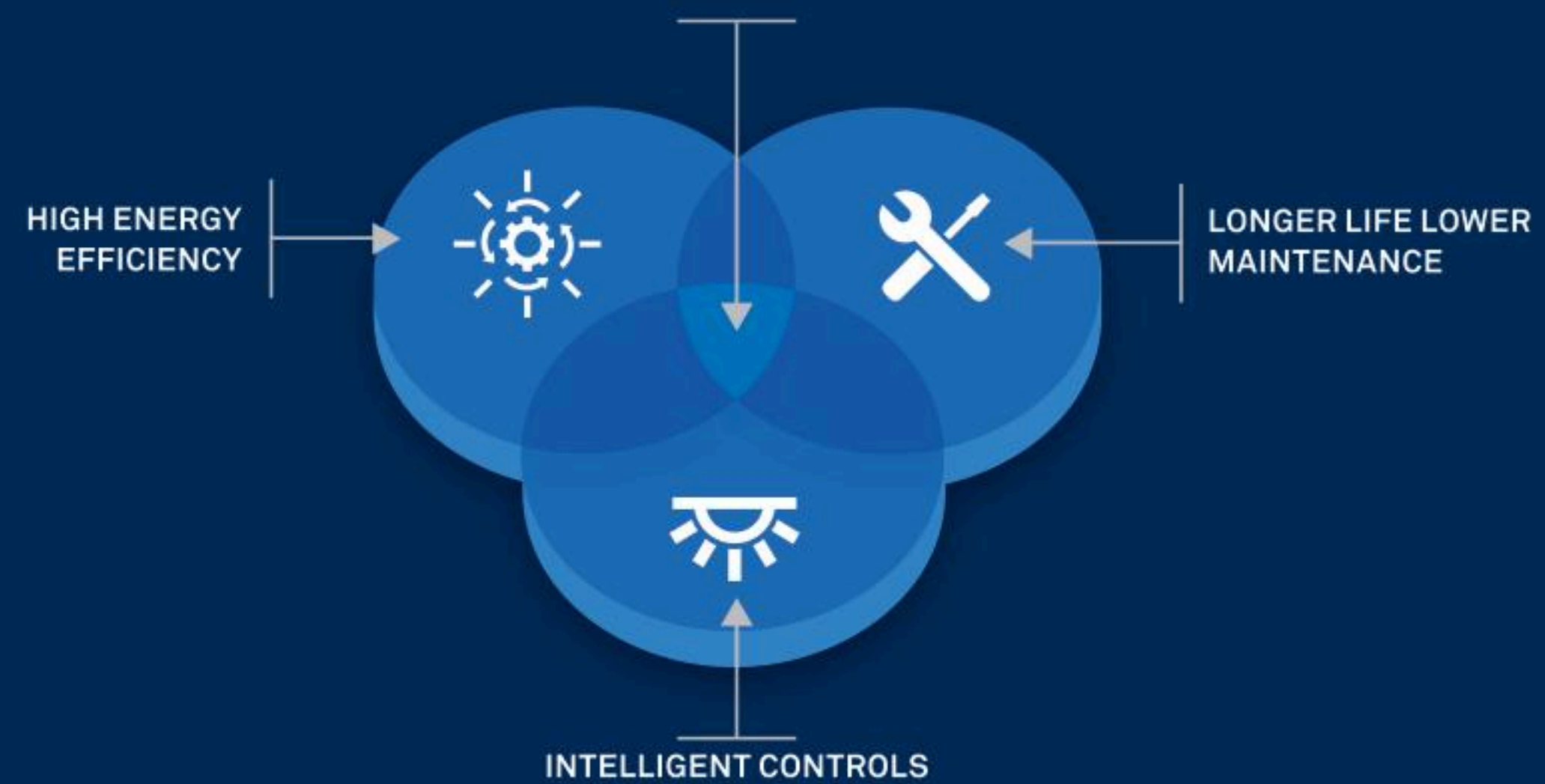


PHARMACEUTICAL
INDUSTRIES



SEMICONDUCTOR &
ELECTRONICS INDUSTRY

LOWEST TOTAL COST OF OWNERSHIP

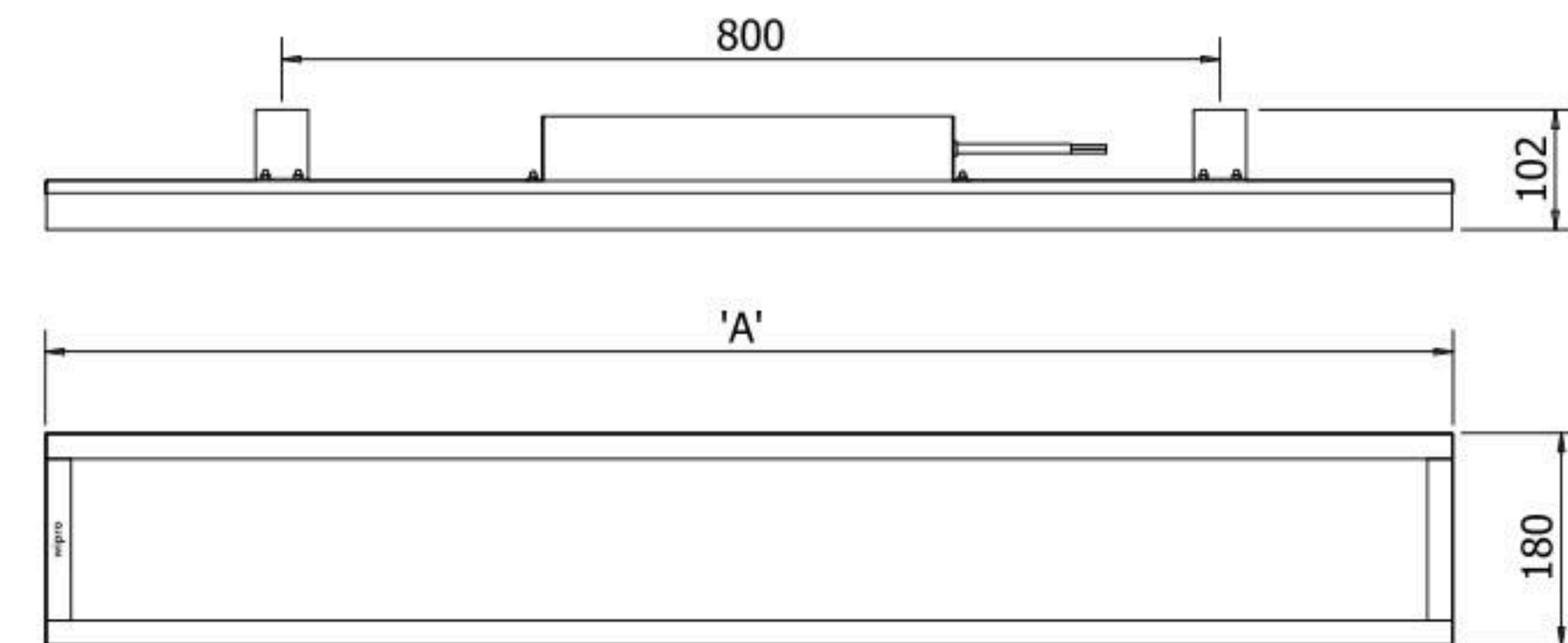


ELECTRICAL DATA

Product Code	*System Wattage	*Rated Voltage (V)	*Mains Current (A)	Case Lot (Nos.)	Approx. Unit Weight (kg)
LH24-132-XXX-57-G1	80W	240	0.35	1	4.3
LH24-152-XXX-57-G1	100W	240	0.44	1	4.3
LH24-162-XXX-57-G1	120W	240	0.53	1	4.8
LH24-242-XXX-57-G1	150W	240	0.66	1	4.9

*RATED SYSTEM WATTAGE AND CURRENT WILL HAVE TOLERANCE AS PER IS 16104: 2012

DIMENSIONAL DETAIL



SYSTEM WATTAGE	DIMENSION 'A'
80W	1000 mm
100W	1000 mm
120W	1200 mm
150W	1200 mm

All Dimensions are in mm, Tolerance +/- 5 mm

INTRODUCING THE BRILLIANCE OF INDUSTRY 5.0

industry
5.0

The next revolution in the lighting industry integrates humans with efficient, intelligent, and accurate machines. While Industry 4.0 revolutionized automation, Industry 5.0 recentres itself around the “Human” factor and focuses on Human-Machine collaboration for creating a sustainable future. Wipro C&I Business has taken the lead to revolutionize the industry by integrating the human touch in Industry 5.0. It proudly presents the latest range of Lighting, Indoor Air Quality, and Anthropometric Seating solutions keeping human wellness in focus.

THE HUMAN-MACHINE EQUILIBRIUM



NET-ZERO TARGETS

Creating a sustainable future for humanity

**WIPRO C&I BUSINESS:
GOOD FOR PEOPLE, GREAT FOR BUSINESS**