

COMPLEX JOBS NEED
EXPERT SOLUTIONS

OPTIMA LED

High on precision. Higher on productivity.



30 YEARS OF WIPRO LIGHTING

Celebrating a journey that is now defining the future of lighting

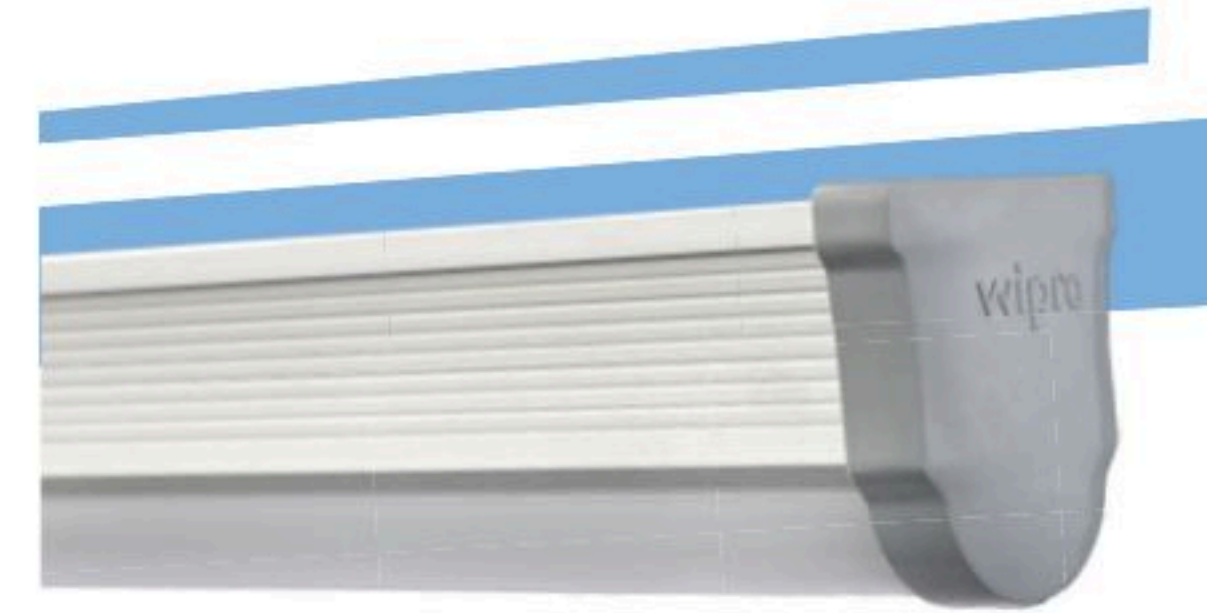
At Wipro, innovation is in our DNA. Our leading-edge technology and customer-centric approach come together to provide intelligent lighting solutions across segments such as manufacturing, healthcare, outdoor, offices, and much more. Recognized globally for thought-leadership and expert solutions, Wipro Lighting is proudly leading the category with excellence for the last 30 years!



MAKING INDUSTRY INTELLIGENT



It's a world of smart factories and smarter solutions. Wipro Industrial Lighting 4.0 impacts businesses by helping users automate manufacturing tasks, maximize productivity and optimize costs. As pioneers of award-winning solutions, Wipro Lighting 4.0 enables industrial setups to become more sustainable, by putting human wellbeing, efficiency and safety at the centre of all our designs. Come, see the future with us. It is getting lit.



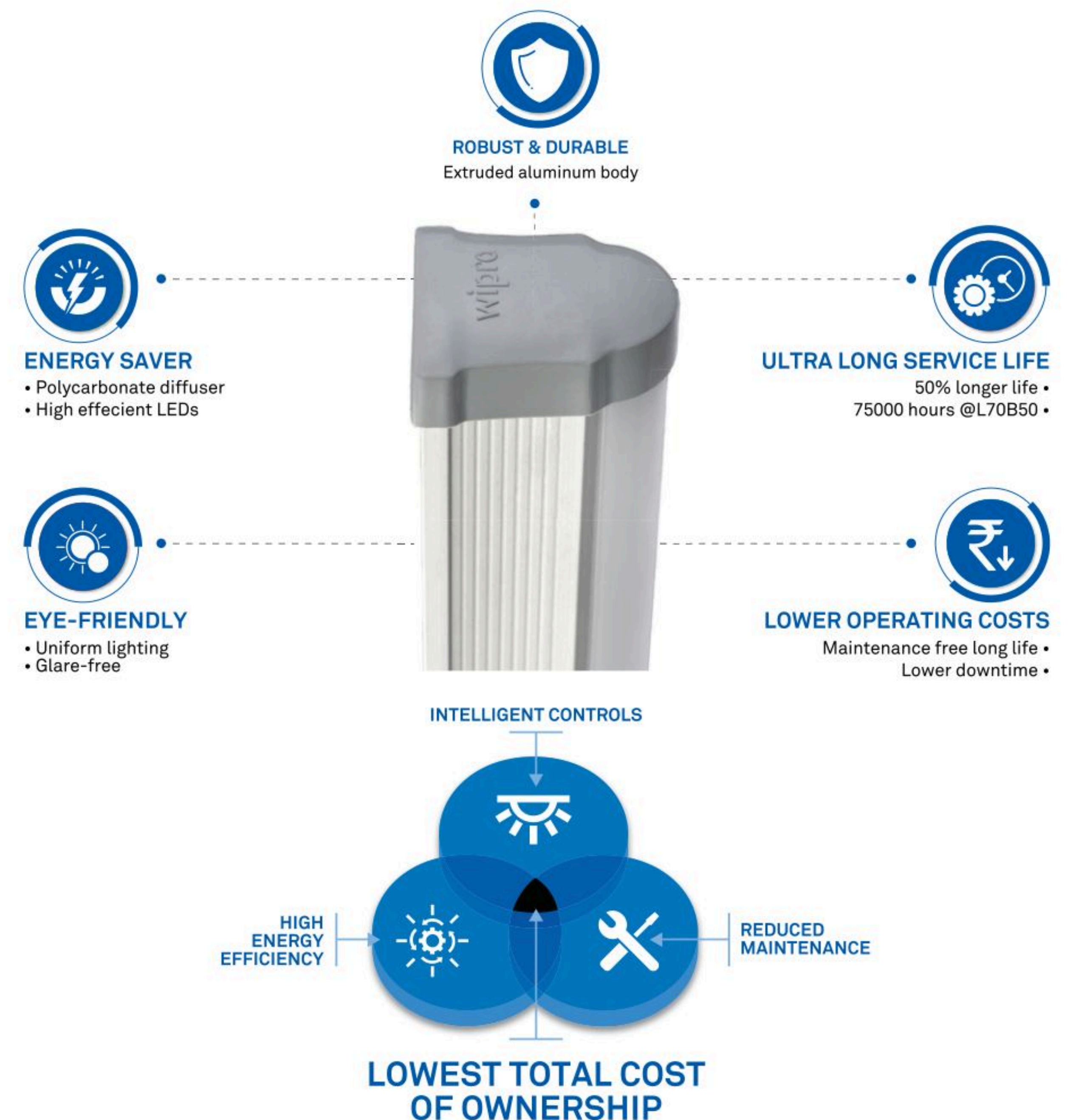
OPTIMA LED

Advanced Industrial Lighting

Fine-precision jobs such as assembly line processes and focused operations call for specialized task lighting. Introducing Optima LED, a futuristic and thoughtful solution! Conceptualized specially for high precision jobs, it conforms to stringent industry standards.

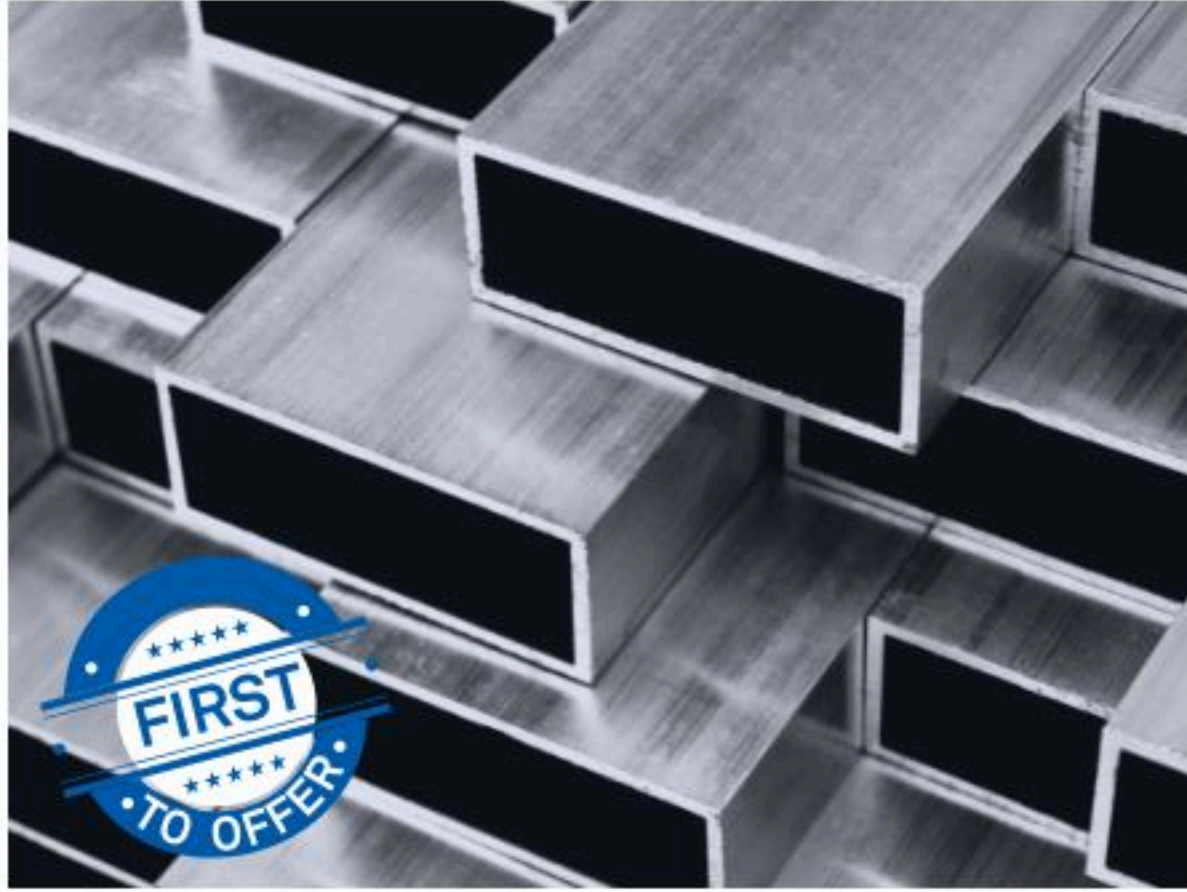
Optima ensures **zero discomfort** to the eye, **enhanced operator safety and optimum productivity** and **efficiency** at work.

OPTIMA - HIGH ON PRECISION. HIGHER ON PRODUCTIVITY.



ULTIMATE IN THE CATEGORY

ENCASED IN ALUMINIUM BODY!



Optima is encased in an aluminum body for better heat dissipation in harsh industrial environments. This keeps the electronics cool, making it highly durable and ensures safer work spaces.



Better conductor of heat



Superior thermal performance

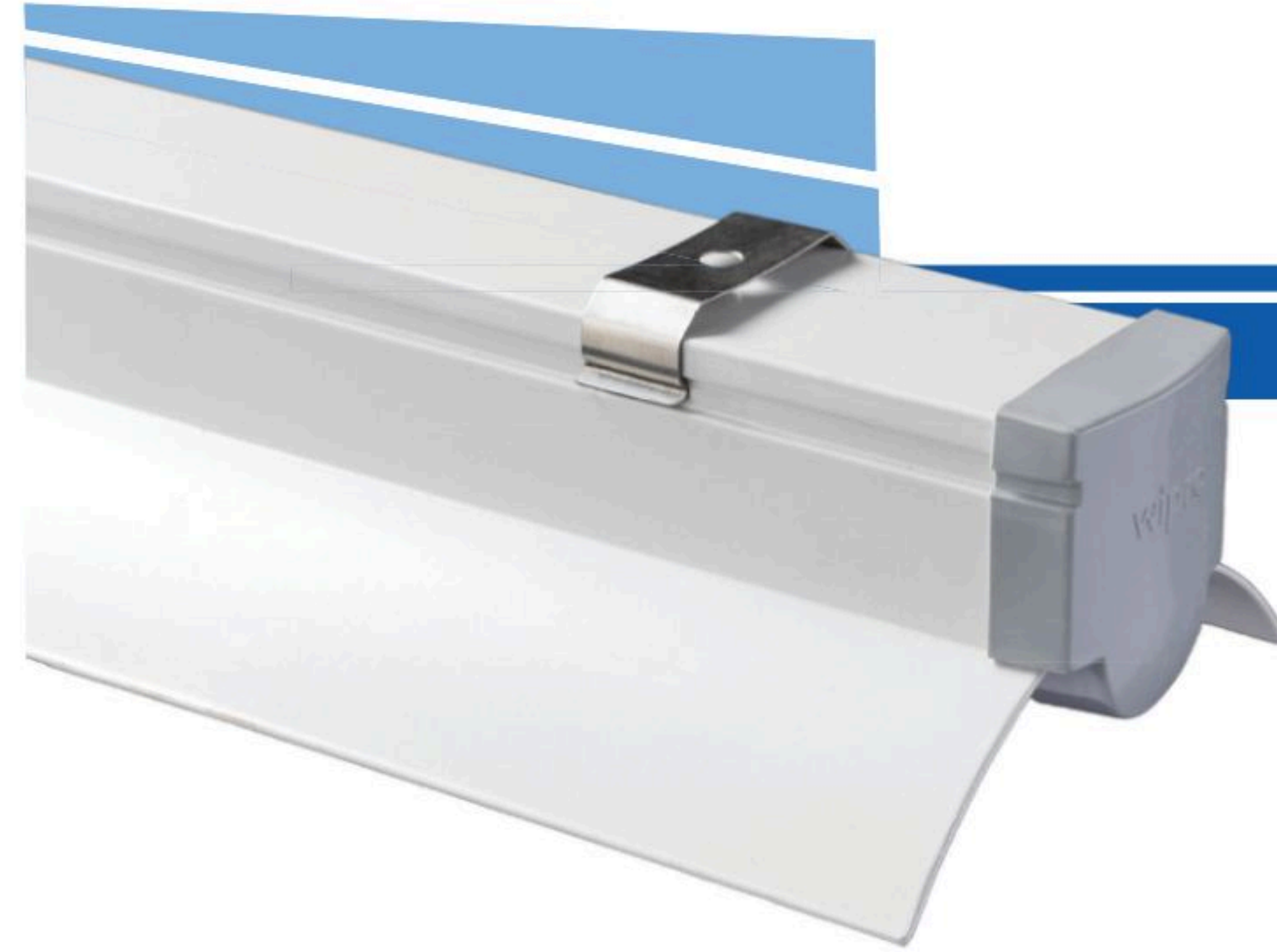
OPTIMAL INGRESS PROTECTION

Trust Optima's adequate IP rating for **higher durability**. Any entry of a foreign particle could result in early damage of fixtures. **IP40 strikes the perfect balance by offering the best value for money and providing optimal efficiency.** So, you enjoy uninterrupted progress at work!



OPTIMA WITH REFLECTOR

The first and only in the category to reflect the best in you!



20%
LESSER FIXTURES



15% higher Downward Light Output Ratio



30% higher Lux levels



20% savings on OPEX

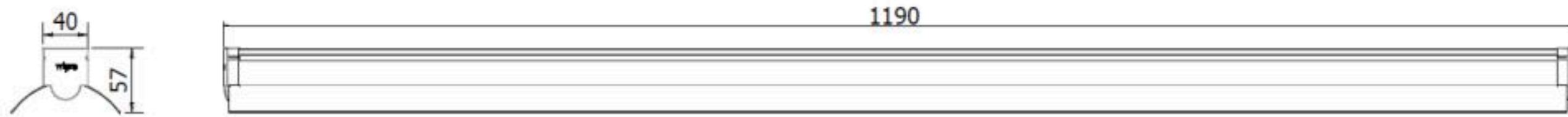


Higher uniformity



Textile Unit

DIMENSIONAL DRAWING



All dimensions are in mm
Tolerance: ± 2 mm

ELECTRICAL DATA

Catalogue No.	Power (W) ±10%	Rated Voltage (V)	Input Current (A)	Case Lot (in nos)
LL24R-541-XX-57-XX	40	240	0.17	6
LL24R-541-XX-57-CD	40	240	0.17	6
LL24R-251-XX-57-XX	20	240	0.08	6
LL24R-251-XX-57-CD	20	240	0.08	6
LL24R-251-XX-57-2F	20	240	0.08	12
LL24R251-XXX57CD2F	20	240	0.08	12

Order codes ending with 'XX' for 4 feet and '2F' for 2 feet | Order 'CD' codes for Conduit Mounting
Also available in 4000 CCT | To order, please replace '57' with '40' in the above codes.



Electronic Assembly Line

OPTIMA HE

The real **HE**ro



Upto
135
Lumens/
Watt

Higher lux levels! Maximum energy savings! Highest efficacy in the industry!

WHAT'S YOUR REQUIREMENT?

HIGHER LIGHT OUTPUT

OR

HIGHER POWER SAVINGS

20W Optima HE
2700 Lumens

40W Optima HE
5400 Lumens

45W Optima HE
6000 Lumens

35% higher light output!
SAME INPUT. HIGHER OUTPUT.

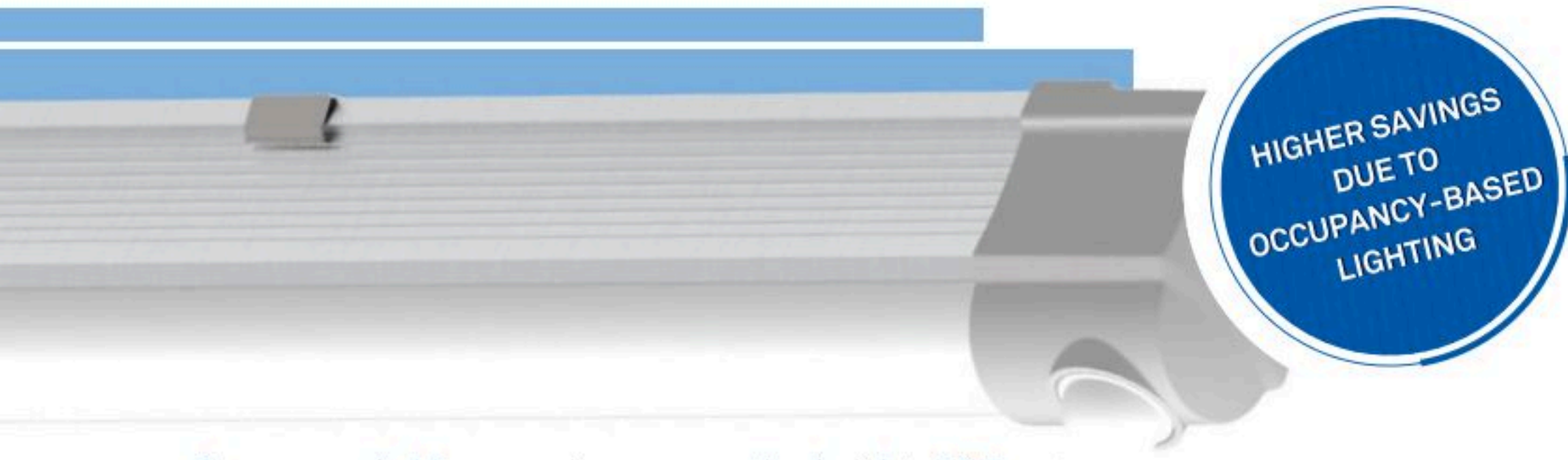
20% electricity saving!
REDUCED INPUT. SAME OUTPUT.

16W Optima HE
2160 Lumens

32W Optima HE
4320 Lumens

OPTIMA SMART

A thoughtfully designed solution that **optimizes energy, reduces costs and enhances user comfort** through touchless operations. Its integrated PIR sensor also provides an **easy and hassle-free installation** experience.



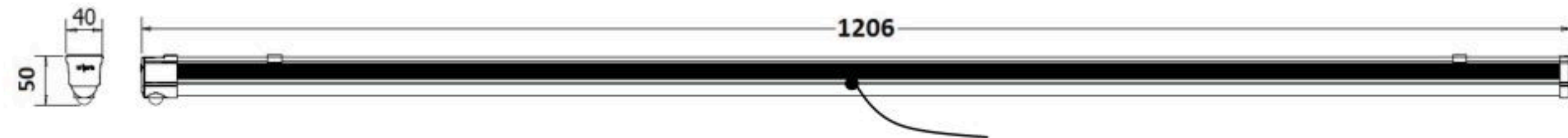
Recommended for a maximum mounting height of 3.5 meters with a coverage range of 5-7 meters.

ELECTRICAL DATA

Catalogue No.	Power (W) ±10%	Rated Voltage (V)	Input Current (A)	Case Lot (in nos)
LL24-541-XXX-57-SN	40	240	0.17	20
LL24-541-XXX57CDSN	40	240	0.17	20
LL24-251-XXX-57-SN	20	240	0.08	20
LL24-251-XXX57CDSN	20	240	0.08	20

Order 'CD' codes for Conduit Mounting
Also available in 4000 CCT | To order, please replace '57' with '40' in the above codes.

DIMENSIONAL DRAWING



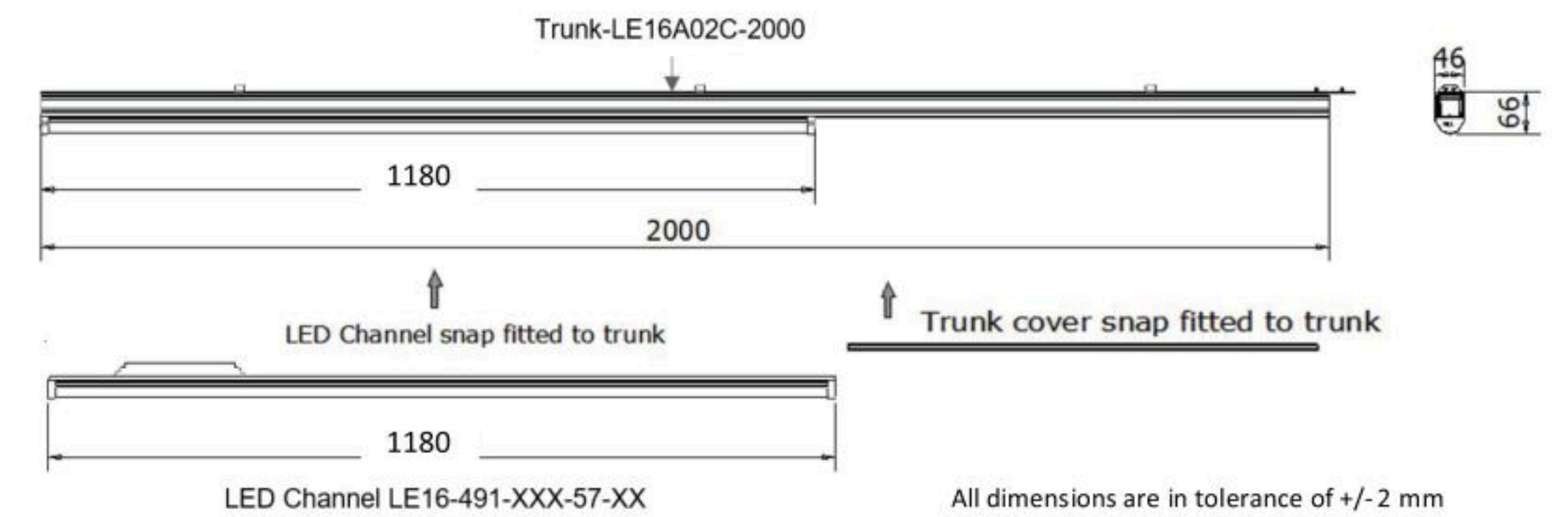
OPTIMA TRUNKING

Going to great lengths to maximize efficiency!

Continuous and seamless lighting ensuring end to end connectivity.



DIMENSIONAL DRAWING



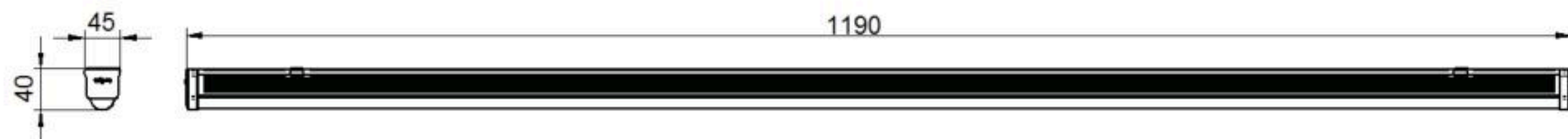
ELECTRICAL DATA

CRI 80

Catalogue No.	Power (W) ±10%	Rated Voltage (V)	Input Current (A)	Case Lot (in nos)
LL24-541-XXX-57-XX	40	240	0.17	20
LL24-541-XXX-57-CD	40	240	0.17	20
LL24-251-XXX-57-XX	20	240	0.08	20
LL24-251-XXX-57-CD	20	240	0.08	20
LL24-251-XXX-57-2F	20	240	0.08	20
LL24-251-XXX57CD2F	20	240	0.08	20
LL24-251-XXX-57-HE	16	240	0.07	20
LL24-311-XXX-57-HE	20	240	0.08	20
LL24-501-XXX-57-HE	32	240	0.14	20
LL24-501-XXX-04-HE	32	240	0.14	20
LL24-621-XXX-57-HE	40	240	0.17	20
LL24-741-XXX-57-HE	45	240	0.19	20
LE16-491-XXX-57-XX	40	240	0.19	8

Order codes ending with 'XX' for 4 feet and '2F' for 2 feet | Order 'CD' codes for Conduit Mounting
Also available in 4000 CCT | To order, please replace '57' with '40' in the above codes.

DIMENSIONAL DRAWING: OPTIMA XX & HE



All dimensions are in mm
Tolerance: ± 2 mm

APPLICATIONS



TEXTILE INDUSTRY



ELECTRONIC INDUSTRY



AUTOMOBILE INDUSTRY



ASSEMBLY LINE OPERATIONS



WAREHOUSE



EDUCATIONAL INSTITUTES



DATA CENTRES



MODERN RETAIL



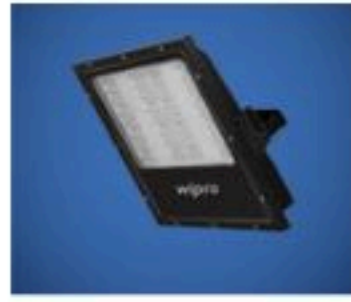
PARKING AREAS



OTHER INDUSTRIAL GENIUSES



RADIAL UNO



RADIAL SQUARE



XPRESS BAY PRO



VISION
CLEANROOM



XLINE



MAXX



BULKHEAD



IMPERIA

wipro advantage



Registered Office: Wipro Enterprises (P) Ltd. 'Wipro House', No. 8, 7th Main, 80 Feet Road, Koramangala, 1st Block, Bangalore 560034, Karnataka, India.

Business Office: Wipro Lighting, 5th Floor, Godrej Eternia - C, Old Pune-Mumbai Highway, Shivajinagar, Pune 411 005, India. (T) 020-66098700, (F) 020-66098777 | helpdesk.lighting@wipro.com



www.wiprolighting.com | Toll-free no: 1800 425 1969 | helpdesk.lighting@wipro.com

Follow us on: [in](#) [t](#) [f](#) [i](#) [v](#)

Branches: Ahmedabad | Bangalore | Bhubaneswar | Chennai | Cochin | Coimbatore | Hyderabad | Indore (MP) | Jaipur | Kolkata | Lucknow | Mumbai | Nagpur | New Delhi | Pune | Punjab | Raipur (CG) | Vishakhapatnam

Innovation and improvement are a way of life at Wipro. All rights reserved. Reproduction of this data in parts or in whole without permission is prohibited. Care has been taken to ensure that the information content within is correct. We reserve the right to modify the product without prior intimation. Imitation of Registered Designs is a punishable offence.