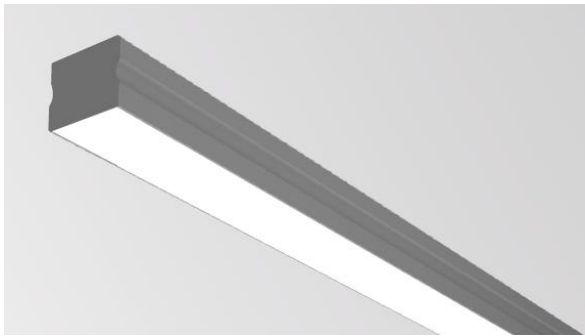


LM37S

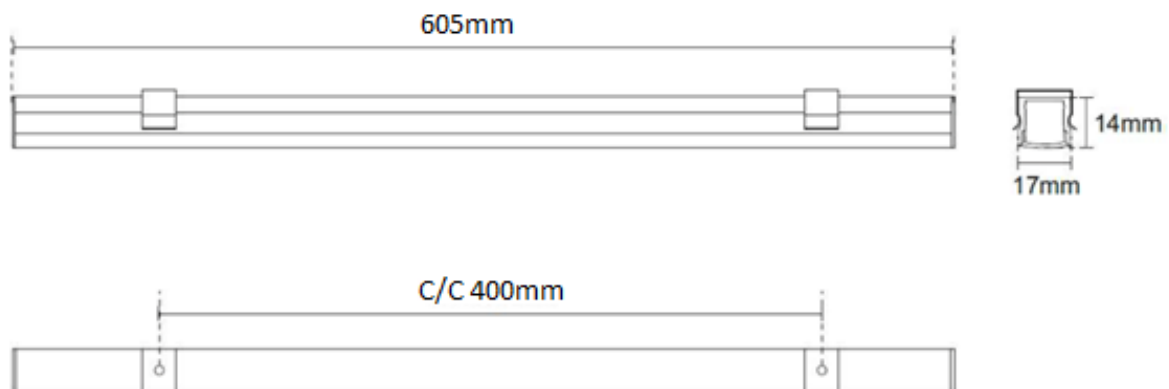
LED Surface mounted Cove light



| Features /Specifications | Benefits |
|--|---|
| <ul style="list-style-type: none">• Anodized finish extruded aluminum housing and endcaps made up of engineering plastic | Light in weight, corrosion Free & better heat management |
| <ul style="list-style-type: none">• Sleek profile and No visible hardware on external surface | Product looks esthetically neat and clean |
| <ul style="list-style-type: none">• High transmittivity translucent diffuser | Better light output, Good weather resistance |
| <ul style="list-style-type: none">• Specially designed, easy to install snap fitted mounting clamps | Suitable for all types of ceiling systems & POP |
| <ul style="list-style-type: none">• External Driver pre-wired up to terminal | Easy Installation and long service life |
| <ul style="list-style-type: none">• High efficacy LEDs | Uniform and optimum light output Ideal for Green Lighting Solution |
| <ul style="list-style-type: none">• With option of CCT 3000k,4000k,5700k | Wide range of colour temperatures options |
| <ul style="list-style-type: none">• IS 10322 part 5/Sec 2 2012 comply | Comply for general purpose lighting |
| <ul style="list-style-type: none">• IP20 | Protection against small objects entry into luminaire for safety |

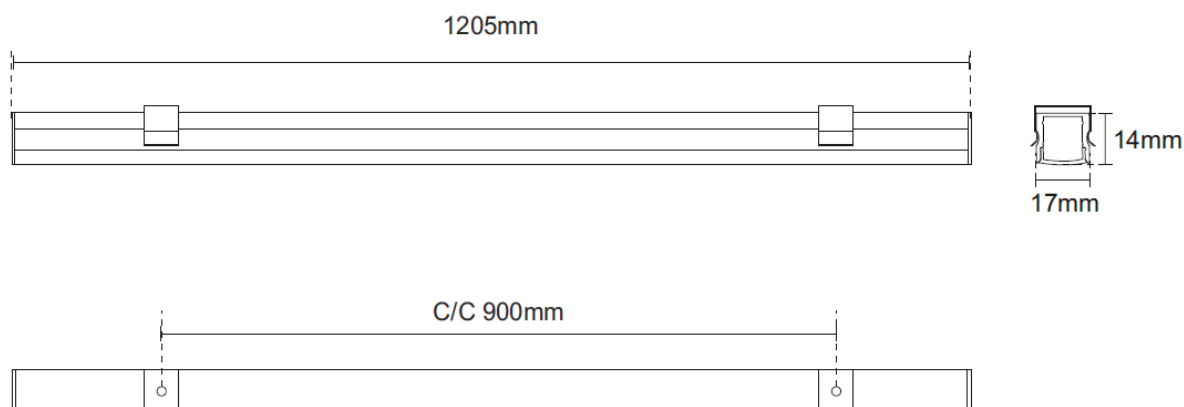
Product Dimensions & Mounting Details

2 Feet (LM37S-101)



Ceiling Cutout – 21mm x 606mm

4 Feet (LM37S-201)



Ceiling Cutout - 21mm x 1206mm

All dimensions are in +/- 5mm tolerance

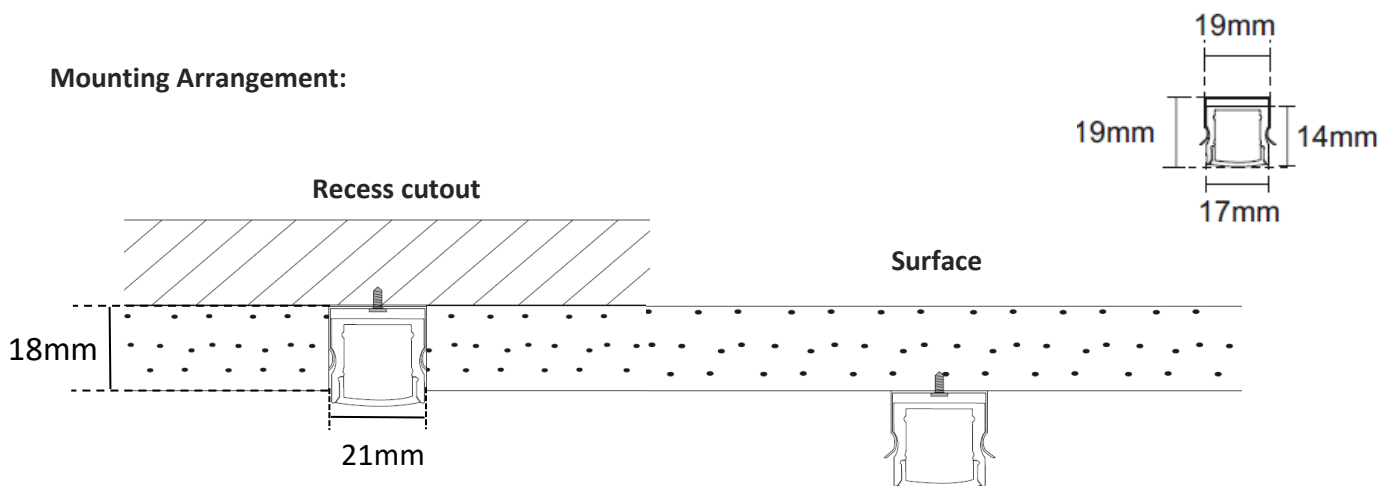
Installation:

- Suitable for indoor application
- Provision for mounting with the help of SS mounting clamps with screws provided with fixture for ease of installation
- Suitable for mounting on True ceiling and False ceiling POP, Gypsum board Etc.

Applications:

- Work area / office spaces, Hotel, Shopping Mall, Theatre, Etc.

Mounting Arrangement:



Electrical Data:

IP-20

| Cat. No. | Power (W)+/- 10% | Rated Voltage (V) | Mains current (A) | Weight (Kg) | Case Lot (Nos) |
|--------------------|------------------|-------------------|-------------------|-------------|----------------|
| LM37S-101-XX-57-G2 | 10W | 240 | 0.04 | 0.15 | 20 |
| LM37S-101-XX-40-G2 | 10W | 240 | 0.04 | 0.15 | 20 |
| LM37S-101-XX-30-G2 | 10W | 240 | 0.04 | 0.15 | 20 |
| LM37S-201-XX-57-G2 | 20W | 240 | 0.09 | 0.35 | 20 |
| LM37S-201-XX-40-G2 | 20W | 240 | 0.09 | 0.35 | 20 |
| LM37S-201-XX-30-G2 | 20W | 240 | 0.09 | 0.35 | 20 |

- 57- Represent CCT 5700k, 40- Represent CCT 4000k, 30- Represent CCT 3000k