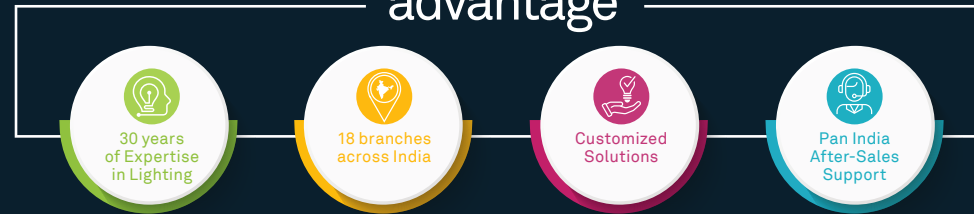


Other Industrial Geniuses



wipro advantage



Registered Office: Wipro Enterprises (P) Ltd. 'Wipro House', No. 8, 7th Main, 80 Feet Road, Koramangala, 1st Block, Bangalore 560034, Karnataka, India.

Business Office: Wipro Lighting, 5th Floor, Godrej Eternia - C, Old Pune-Mumbai Highway, Shivajinagar, Pune 411005, India. (T) 020 66098700, (F) 020 66098777

www.wiprolighting.com | Toll free no: 1800 425 1969 | helpdesk.lighting@wipro.com

Follow us on: [in](#) [t](#) [f](#) [i](#) [y](#)

Branches: Ahmedabad | Bangalore | Baroda | Bhubaneshwar | Chandigarh | Chennai | Cochin | Coimbatore | Hyderabad | Indore | Jaipur | Kolkata | Lucknow | Mumbai | Nagpur | New Delhi | Pune | Raipur | Vishakhapatnam

Innovation and improvement are a way of life at Wipro. All rights reserved. Reproduction of this data in parts or in whole, without permission, is prohibited. Care has been taken to ensure that the information content within is correct. We reserve the right to modify the product without prior intimation. Imitation of Registered Designs is a punishable offence.



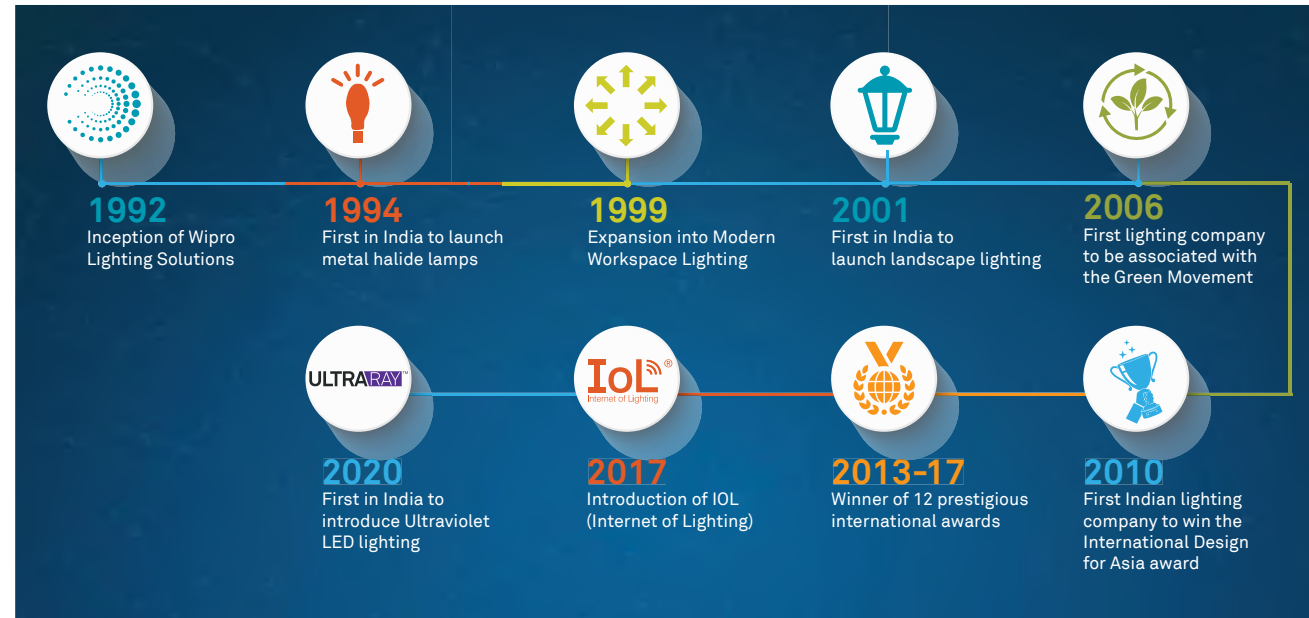
Maxx Wellglass

Revolutionary design to redefine industrial spaces

30 years of Wipro Lighting

Celebrating a journey that is now defining the future of lighting

At Wipro, innovation is in our DNA. Our leading-edge technology and customer-centric approach come together to provide intelligent lighting solutions across segments such as manufacturing, healthcare, outdoor, offices and much more. Recognized globally for thought-leadership and expert solutions, Wipro Lighting has been leading the category with excellence for the last 30 years!



Making Industries Intelligent

It's a world of smart factories and smarter solutions. Wipro Industrial Lighting 4.0 impacts businesses by helping users automate manufacturing tasks, maximize productivity and optimize costs. As pioneers of award-winning solutions, Wipro Lighting 4.0 enables industrial setups to become more sustainable, by putting human wellbeing, efficiency and safety at the centre of all our designs. Come, see the future with us. It is getting lit.



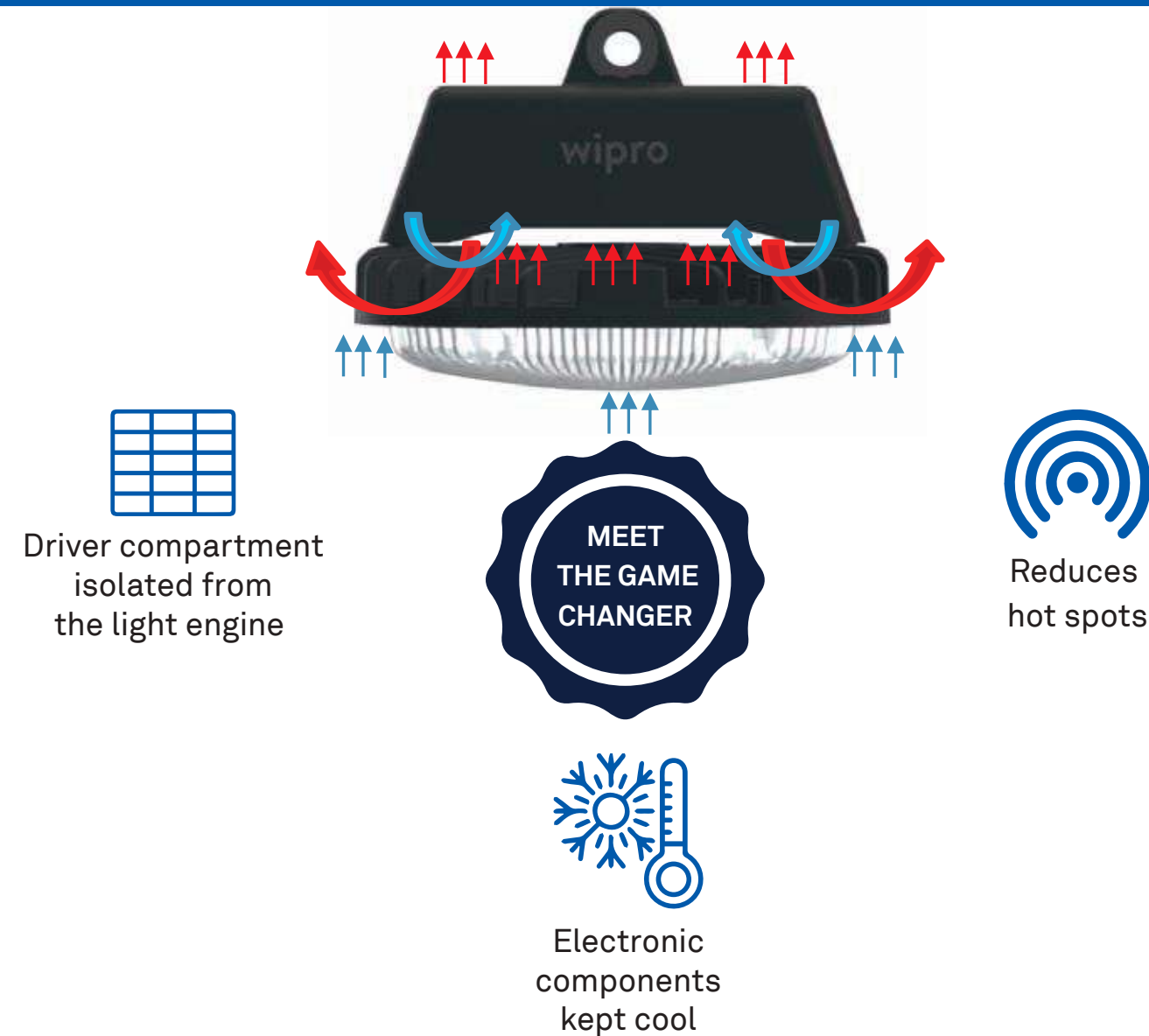
Maxx Wellglass

Maxx out productivity. Minimize inefficiencies.

Heavy duty industries such as cement, metals, and power plants operate in extremely harsh conditions. Their dusty environment and high ambient temperature, makes thermal management of LED fixtures more critical and challenging. And therefore, demand specially designed luminaires to deliver reliable and superior performance under such tough conditions, consistently.

Introducing Maxx Wellglass. A complete revolution in design that transforms industrial spaces. It comes with a unique innovation in technology and form factor like never before, designed to deliver optimum performance and provide uniform and wider light distribution. Get ready to embrace a new era of lighting and say goodbye to frequent maintenance and replacements!

Maxx thermal performance



Maximum life Minimum maintenance

1,00,000
HOURS
@L70B50

ULTRA-LONG LIFE

A lifespan like never before!
Say goodbye to frequent maintenance and replacements!



HIGHER DURABILITY

- IP66 rated
- IK08 impact resistant
- Robust construction
- Corrosion resistant pure polyester powder coating
- Pressure die-cast aluminium housing



MINIMUM MAINTENANCE

- High specification potted IP65 driver
- Internal 4KV surge protection
- Inline IP65 10KV SPD for additional protection (optional)



EASY & FLEXIBLE INSTALLATION

- Cradle mounting
- Company fitted eye-bolt mounting

APPLIED FOR
DESIGN REGISTRATION



Maxx optical performance

UP TO
115
LUMENS
PER WATT



SPECIALLY DESIGNED
FRESNEL LENS



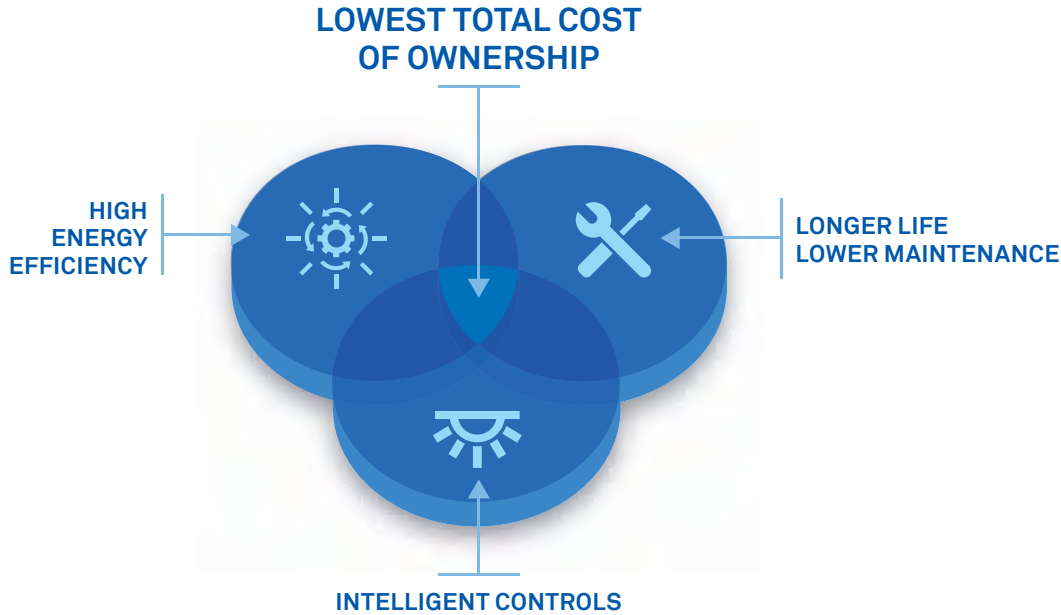
Uniform and
glare-free lighting



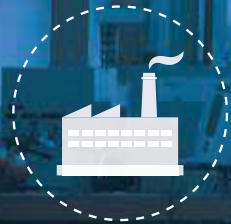
Minimizes
light loss



Wider light
distribution



Applications



Heavy
Industry



Metals & Minerals
Industry



Cement
Industry



Power
Plant

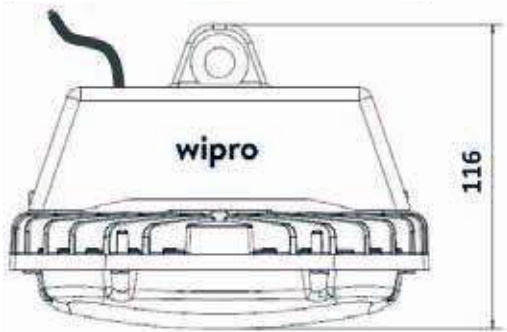
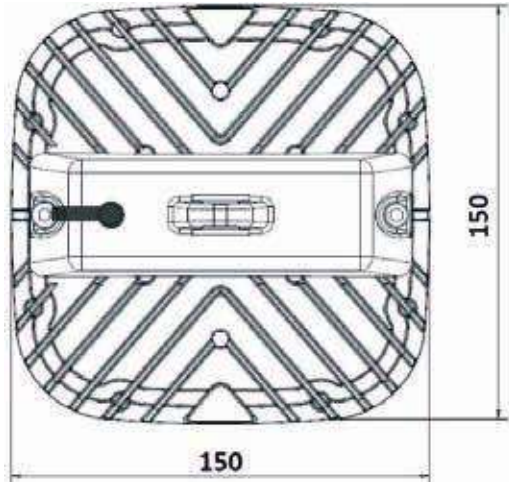
Product specifications

80%
higher savings
over the lifetime
of Maxx

Electrical data

Product Main Code	System Wattage +/-10%	Rated Voltage (V)	Mains Current (A)	Case Lot (Nos)	Unit Weight (kg)+/-0.25	Lumens
LE09-501-XXX-57-XX	35W	240	0.16	8	1.0	4200
LE09-571-XXX-57-XX	40W	240	0.17	8	1.0	4820
LE09-671-XXX-57-XX	55W	240	0.24	8	1.0	7090

Also available with cradle mounting option. To choose, please replace 'XX' with 'CD' in the above codes.



All dimensions are in mm. Tolerance +/-2.