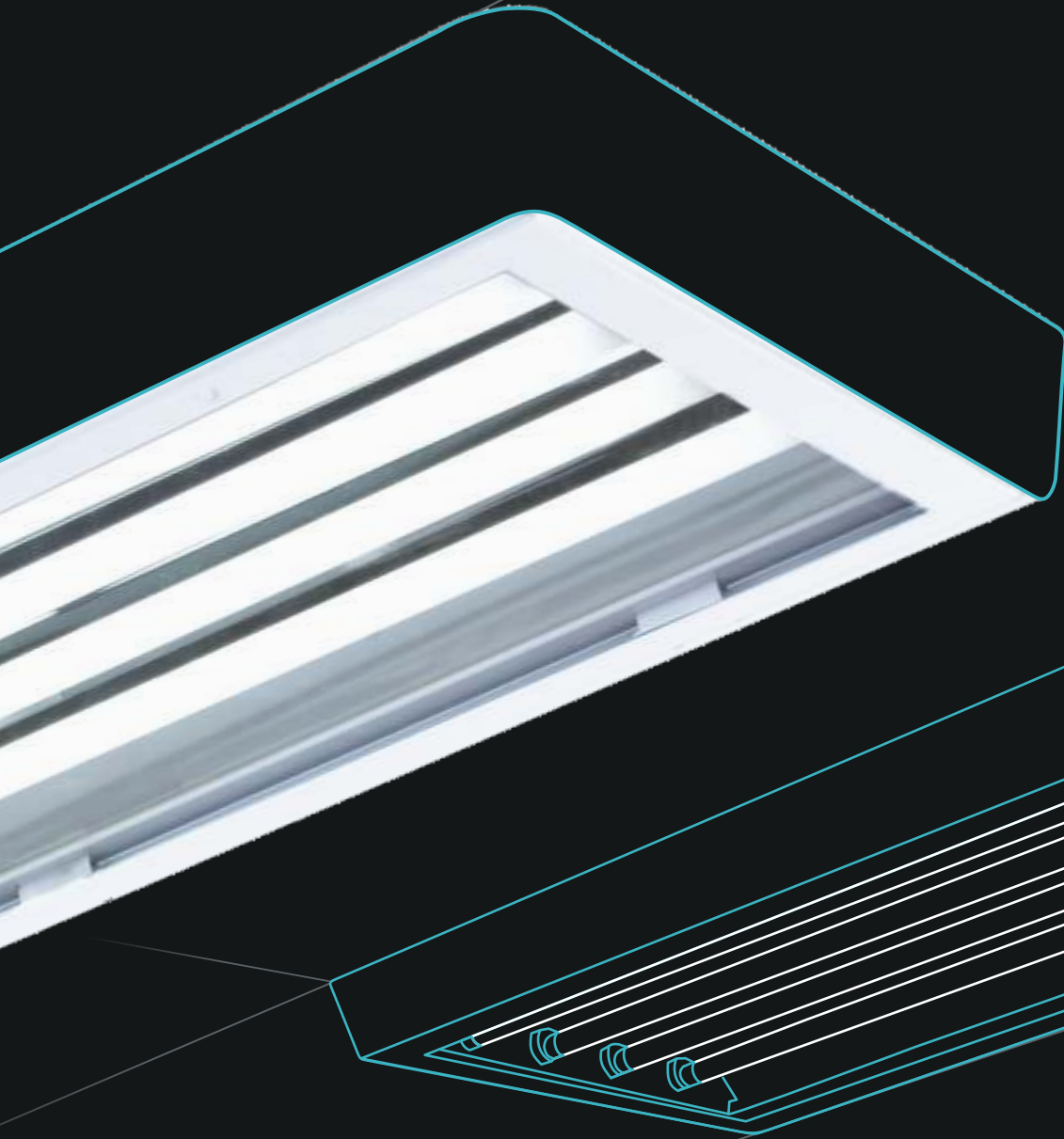


indi.X
T5 MIDBAY & HIGHBAY



advanced
engineering
best-in-class
efficiency

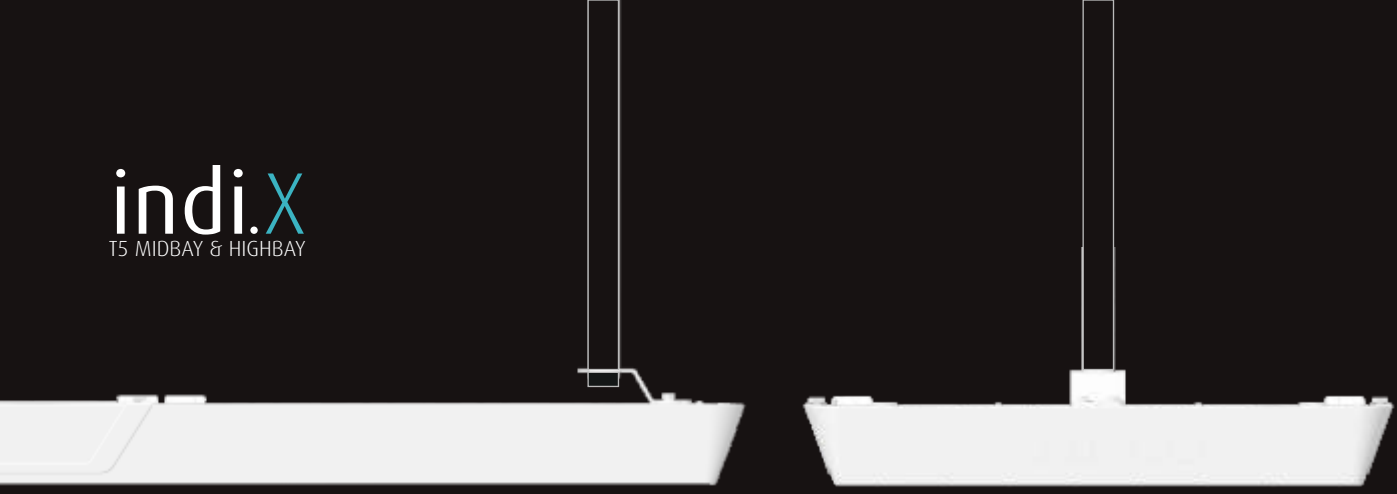


easy
maintenance
enhanced
performance

indi.X
T5 MIDBAY & HIGHBAY

See clearly and work better, this ideology has inspired us to develop a lighting system, to last longer and enhance industrial productivity. Also, industries today are cognizant of the need of smart lighting solutions to save energy cost. Wipro Lighting brings you Indi.X an enclosed midbay and highbay engineered for industrial

processes, mechanical and visual operations that demand high precision. Its user friendly design helps in reducing installation time and aids in easier maintenance. Its instant start lamps ensure no down time and hence, leads to higher performance.



structurally
reliable
optically
effective



Shop floors require right levels of lighting as this directly impacts the performance of the task. Also there is lot of focus on reducing downtime. Indi.X with its superior lighting quality helps in lighting shopfloors efficiently and thus aid in increasing efficiency in output while reducing energy costs at the same time.

Indi.X | a unique combination

human
comfort

Excellent narrow beam and balanced light distribution, creates a sense of well being and changes the conventional way of illuminating the shopfloors. It aids in good visibility thereby enhancing task concentration. It's installation friendly feature makes it easy for maintenance and replacement of the lamps and ballast.

versatile &
reliable

Available in versatile 4 and 6 (T5) lamp option, gives the flexibility to install less number of luminaires, creating a cleaner ceiling appearance yet with required lux levels and are proven to be cost effective. Its instant start feature reduces downtime which ensures long service life.

functional
design
uniform
illumination

superior
optics

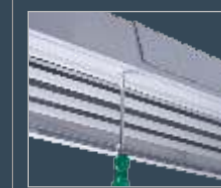
Specially designed high purity aluminum reflector provides superior narrow beam light distribution enhancing the optical performance, enabling focus onto the task area, making it free from errors.

ease of
maintenance



Side access to the Ballast makes it easy for maintenance and avoids removing and remounting of the luminaire.

quarter turn
mechanism



smart Quarter turn mechanism gives the flexibility to install and replace lamp without disturbing the ceiling and trusses.



no more
waiting

Instant start lamp ensures no down time once power is restored.

longer
service life

Convection airflow system aids good heat dissipation and thermal management, hence giving a better component and system life.

SPECIFICATIONS

- Powder coated CRCA housing with integral control gear and reflector
- Specially designed pre-anodized super high purity aluminum, narrow beam reflector system
- Clear, non-yellowing PMMA diffuser aesthetic end caps
- Complete with ballasts and accessories pre-wired up to terminal block in control gear compartment
- Available in enclosed version with 4 & 6 lamp configurations
- Side access control gear for better maintenance and installation
- Hingeable enclosure with quarter turn lock mechanism for ease in lamp maintenance
- Convection airflow system keeps control gear cooler for longer life span

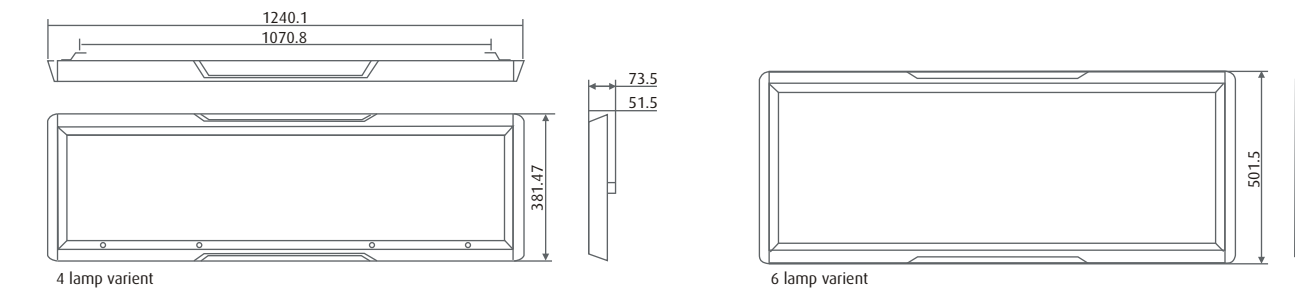
INSTALLATION

- Universal mounting bracket to take care of all your mounting arrangements
- Tool-less maintenance with special loss proof quarter turn and loss proof captive screws for user-friendly maintenance

ACCESSORIES

- Polycarbonate T5 FTL lamp holder, G5, with phosphor bronze contacts
- Loop in loop out GFP mains connector for 2.5 sq. mm incoming cable with in-built loop-in loop-out

DIMENSION DRAWINGS



All dimensions are in mm. Tolerance ± 2mm

ELECTRICAL DATA

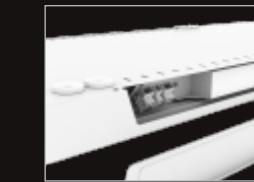
IP20

CAT NO.	VARIANT	LAMP (W)	VOLTAGE (V)	MAINS CURRENT (A)	APPRX WT. (KG)	CASE LOT (IN NOS)
WHF 38428 SGW	Enclosed - narrow	4 x 28W FTL (T5)	240	0.52	6.1	02
WHF 38454 SGA	Enclosed - narrow	4 x 54W FTL (T5)	240	1.00	6.1	02
WHF 38628 SGW	Enclosed - narrow	6 x 28W FTL (T5)	240	0.78	7.4	02



installation
friendly
long
service life

loop in
loop out

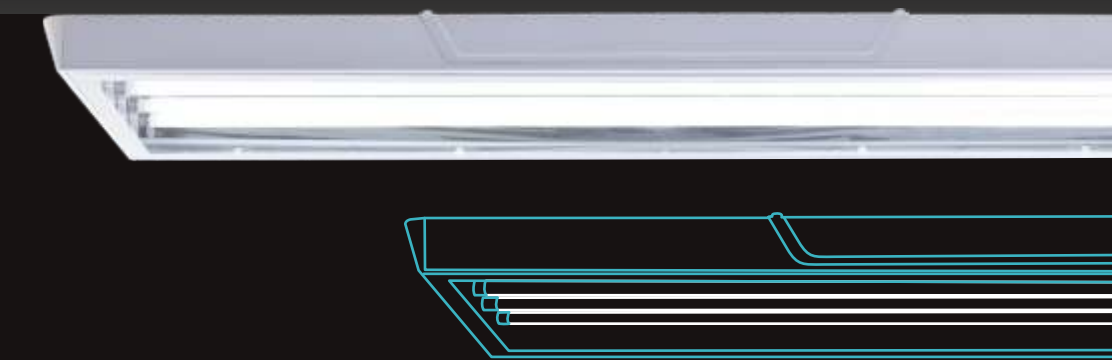


Loop in Loop out connection through external connector compartment aids in easy installation.

universal
mounting brackets



Universal mounting bracket makes it easy to fit the luminaire anywhere without causing hindrance to the environment. It is suitable for surface and conduit mounting.



Wipro Lighting Advantage

Innovative lighting solutions for indoor and outdoor applications through:

- Energy saving solutions with latest international technologies
- Capability to service multi-locational accounts
- Service commitment: 35 branches and over 400 dedicated stockists
- Ease of contact through website
- Trustworthiness and reliability of Wipro

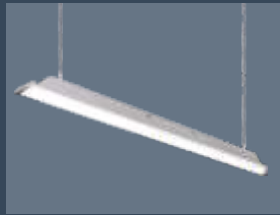
Related products



QuadLED



StormLED



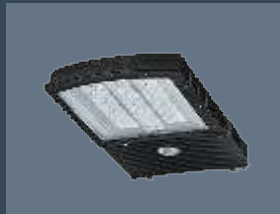
XlineLED



ProLED



VisionLED



IndiRoadLED

Wipro Design

India's First
App on
Lighting Design

Design Office and Industry Spaces

Create and mail BOQs

View how designed spaces would look like

View latest offerings from Wipro

Download for free from

iOS and Google Play Store



Business Office:

Wipro Lighting, 5th floor, Godrej Eternia - C, old Pune-Mumbai road, Shivajinagar, Pune 411 005
Tel: 020-66098700, Fax: 020-66098777. E-mail: helpdesk.lighting@wipro.com

Registered Office:

Wipro Enterprises Ltd.
#134, Doddakannelli, Sarjapur road, next to Wipro corporate office, Bangalore - 560 035. India

New Delhi: 011-41708122-29, Mumbai (Vikhroli): 022-67213755, Bangalore: 080-41503260-68, Chennai: 044-32518016, Kolkata: 033 44045886/44045887, Pune: 020-25510583/25535081, Hyderabad: 040-27176082/27178906/05, Vishakhapatnam: 96184 56143/96528 21212, Chandigarh: 0172-5018734/2660714, Ludhiana: 98143 50562, Karnal: 96719 60518/98143 50562, Dehradun: 98143 50562, Lucknow: 0522-2434352/78440 02014, Patna: 97714 14655/98310 69725, Guwahati: 94310 10627/98310 69725, Jaipur: 0141-2280289, Jodhpur: 99282 11211, Ahmedabad: 079-40073546, Baroda: 0265-2395830/35, Surat: 99254 40019, Rajkot: 99980 57866, Raipur: 0771-3265725, Indore: 0731-3299668/94250 72138/96173 63605, Bhopal: 94250 72138, Jabalpur: 98222 44448, Jamshedpur: 85214 48424/98310 69725, Bhubaneswar: 99030 27514/98310 69725, Nagpur: 0712-2569878, Aurangabad: 98222 44448, Goa: 95619 62002, Hubli: 95382 96651, Mangalore: 97405 22899/99614 64188, Cochin: 98950 65656/99614 64188, Coimbatore: 96556 93535/98439 48439, Madurai (Tamilnadu): 98439 48439

Innovation and Improvement are a way of life at Wipro. All rights reserved. Reproduction of this data in part or in whole without permission is prohibited. Care has been taken to ensure that the information content within is correct. We reserve the right to modify the product without prior intimation. Imitation of Registered Designs is a punishable offence.